



## Abu Dhabi

### Eithad Airways In Port Race Addendum

#### 1 THE SCHEDULE

##### Wednesday 11<sup>th</sup> January In Port Race Practice

- 13.50 warning signal for first practice start
- 14.05 warning signal for second practice start
- 14.20 warning signal for Practice Race start

##### Friday 13<sup>th</sup> January In Port Race

13.50 Warning Signal

#### 2 THE COURSES

Course 1- Pennant 1:

Start— Variable mark 1 gate —Start pin to starboard— Variable mark 3 to starboard—IWC Finish

Course 2- Pennant 2:

Start— Variable mark 1 gate —Start pin to starboard— Variable mark 3 to starboard- IWC mark to port— Variable mark 1 gate —Pin Finish

Course 3-Pennant 3:

Start— Variable mark 1 gate —Start pin to starboard— Variable mark 3 to starboard —IWC mark to port — Variable mark 3 to starboard — IWC Finish

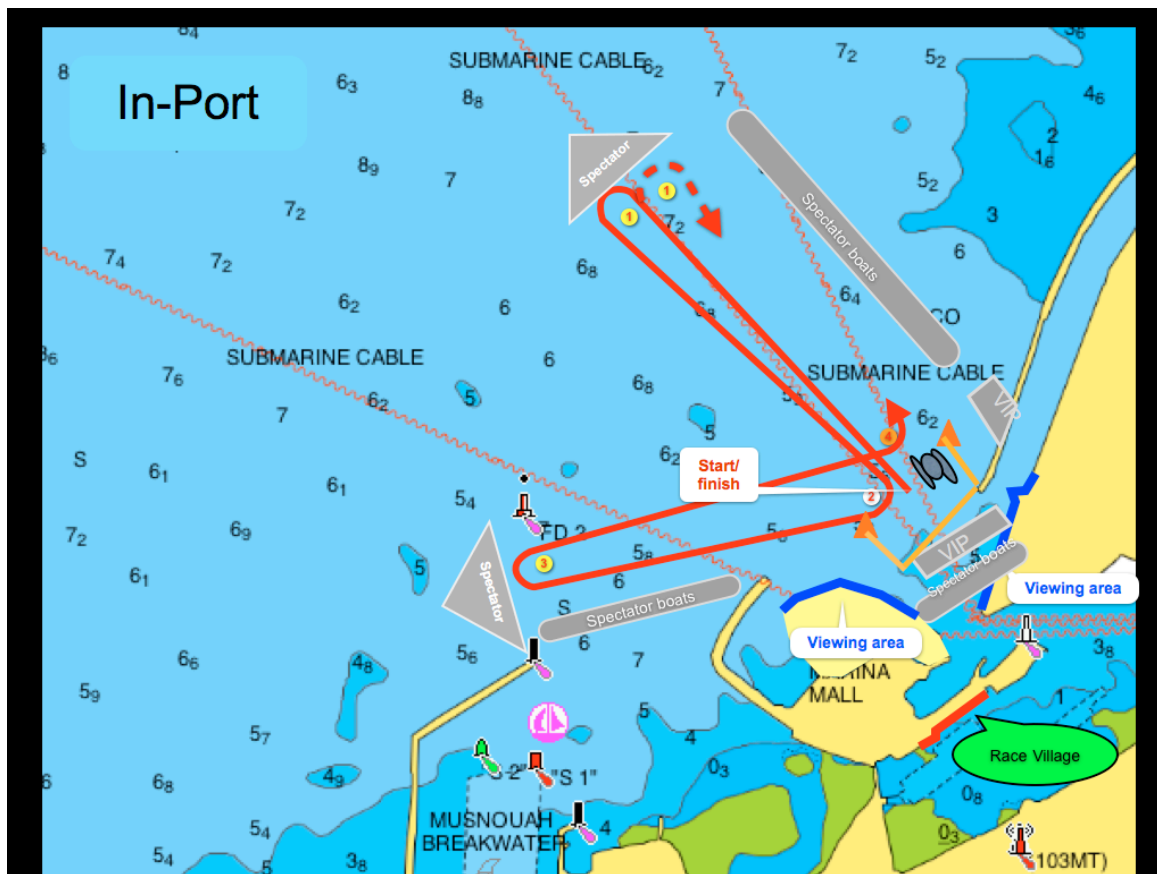
Course 4-Pennant 4

Start—Variable mark 1 gate —Start pin to starboard— Variable mark 3 to starboard - IWC mark to port— Variable mark 1 gate — Start pin to starboard—Variable mark 3 to starboard— IWC Finish

#### 3. THE MARKS

	Latitude	Longitude	Description
a. Start Boat			62ft White Power Boat with Fly Bridge
b. Variable Gate Marks (1)			Yellow 3m branded Volvo Marks
c. Start Pin (2)			White 3m Branded Volvo Mark
d. Variable Mark (3)			Yellow 3m branded Volvo Marks
e. Mark (4)			Orange IWC mark

Positions are approximate. Datum: to WGS 84.



#### 4. EXCLUSION ZONES

Orange buoys with white sleeves, and large triangular orange buoys will mark the exclusion zone. While racing no part of a boat's hull may cross the line between any two adjacent exclusion buoys. This sailing instruction only applies to the exclusion buoys in the starting box as shown in the diagram. The large triangular orange exclusion buoys will mark the limits of the starting box

Other yellow and orange buoys will be laid around the racecourse to exclude spectator boats and do not have any relevance to racing boats.

#### 5. MARK POSITIONS

(a) The range and bearing of the variable marks will be displayed on the Start Boat and announced on VHF Channel 77 before the warning signal. The bearing for the gate will be from the Start Boat to the right hand gate mark.

(b) The gate shown in the diagram may be replaced by a single mark. When a single mark is used, it is to be left to port.

#### 6. THE START

(a) The intended starting area is at the harbour entrance. This may be moved depending on the wind direction and *Boats* will be informed on VHF Channel 77.

(b) Individual Recall notification may be broadcast on the VHF Channel 77. Failure of the Race Committee to notify, delay in notification, or the sequence of such notification shall not constitute grounds for redress. This amends RRS 62.1.

#### 7. THE FINISH

The finishing mark referred to in the General In-port and Pro-am SI 13.1 will be the starting pin for course 2 and the IWC mark for courses 1,3 & 4.