

Public Interpretation # 008

Rule 6.6.1 states;

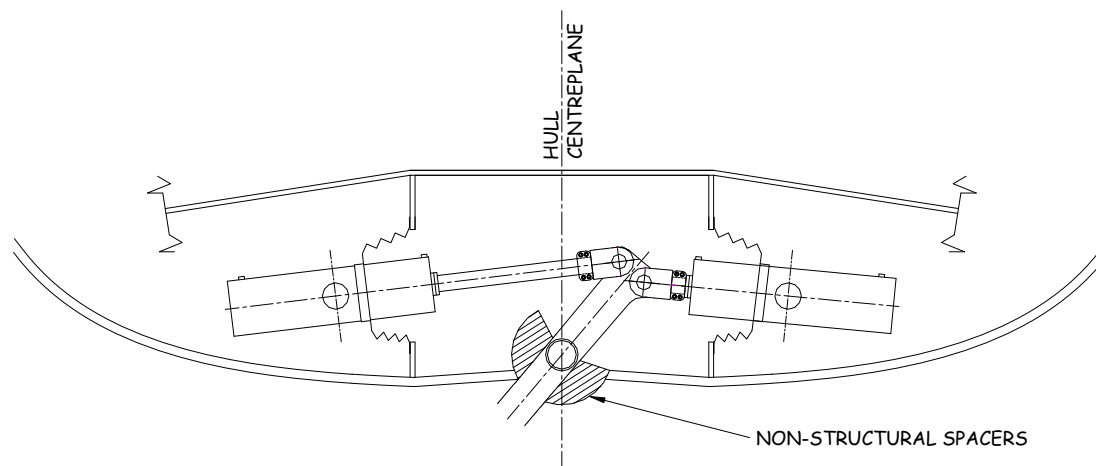
“Only steel and steel alloys are permitted in the structure of the keel fin, including fin/bulb attachments and fin/hull attachments. This requirement shall apply to all components connecting the fin to the boat including pins, bolts, and bearing plates/brackets which attach the fin to the hull structure. This material rule does not apply to bearings, bearing liners and bearing damping/restraint systems, which may be of any material except titanium, magnesium, cobalt or aluminium alloys. The use of surface fairing, filling and painting materials no greater than a total thickness of 5mm, measured normal to the surface is permitted.”

Rule 6.6.4 states;

“Non-structural cover plates and spacers, which perform no task other than improve the hydrodynamic characteristics of the fin to hull intersection, may be constructed using any materials permitted for the construction of rudders and daggerboards (see rule 6.5).”

Questions:

1. Are the following non-structural cover plates and spacers at the fin to hull intersection subject to the same dimensional limitations as surface fairing, filling and painting materials?



Answers

Interp.	Question	Answer	Rule	Notes
PI 008	1	No	6.6.4	These spacers will not be considered as part of the keel fin for the purposes of rule 6.6.1



A.R. Cloughton

Chairman VIG

9th August 2010