

# VOLVO OCEAN RACE

ROUND THE WORLD 2008 - 2009

## Leg 2 Addendum

### 1 THE COURSE.

(a)

#### Course 1: Pennant 1

Start—mark 1 to starboard- mark 2 to starboard—mark 3 to starboard. Robben Island to starboard—scoring waypoint passing west to east-- finish off Cochin

#### Course 2: Pennant 2

Start-- Robben Island to starboard-- scoring waypoint passing west to east-- finish of Cochin

### 2. THE MARKS

	Position		Description
<b>a</b> Start mark	NW of Harbour entrance		A white truncated conical mark.
<b>b</b>	<b>Latitude</b>	<b>Longitude</b>	
<b>c</b> Mark 1 to starboard	33 <sup>0</sup> 49.500'S	018 <sup>0</sup> 27.000'E	Laid Mark: Volvo black and white with an orange top
<b>d</b> Mark 2 to starboard	33 <sup>0</sup> 52. 800'S	018 <sup>0</sup> 28.400'E	Laid Mark: Volvo black and white with an orange top
<b>e</b> Mark 3 to starboard	33 <sup>0</sup> 53. 500'S	018 <sup>0</sup> 25.500'E	Laid Mark: Volvo black and white with an orange top
<b>f.</b> Mauritius Scoring Waypoint*	20 <sup>0</sup> 00.000'S	058 <sup>0</sup> 00.000'E	No physical marks present
<b>g</b> East African exclusion zone**	20 <sup>0</sup> 00.000'S	058 <sup>0</sup> 00.000'E	No physical Marks present
<b>h</b> Finish Line Mark	09 <sup>0</sup> 57.820'N	076 <sup>0</sup> 08.730'E	Fairway Mark

\*The Mauritius Scoring Gate: Boats shall pass across the line of longitude 58<sup>0</sup>00.000E south of Latitude 20<sup>0</sup>00.000S from the direction of the previous mark.

\*\*The East African exclusion zone: Boats shall not enter an area formed at its southern side by Latitude 20<sup>0</sup>00.000'S, on the Eastern side the Longitude

058<sup>00.000</sup>'E and the Western side - the Eastern Coastline of the African Continent, this area will rank as an obstruction.

### **3. THE START**

- (a) The starting area is north-west of the harbour entrance.
- (b) The starting line is between the orange flag on the Race Committee Vessel and a White inflatable Volvo mark
- (c) Individual Recall notification may be broadcast on the VHF Channel 6. Failure of the Race Committee to notify, delay in notification or the sequence of such notification shall not constitute grounds for redress. This amends RRS 62.1.

### **4. SCORING WAYPOINT**

The Mauritius scoring waypoint is a line of Longitude 058<sup>00.000</sup>'E, south of Latitude 20<sup>00.000</sup>'S, crossing the line from west to east.

### **5. APPROACHING THE FINISH**

Boats shall inform Cochin Marine or a race committee finish vessel on VHF Channel 6 when they are approximately 10 nautical miles from the finish.

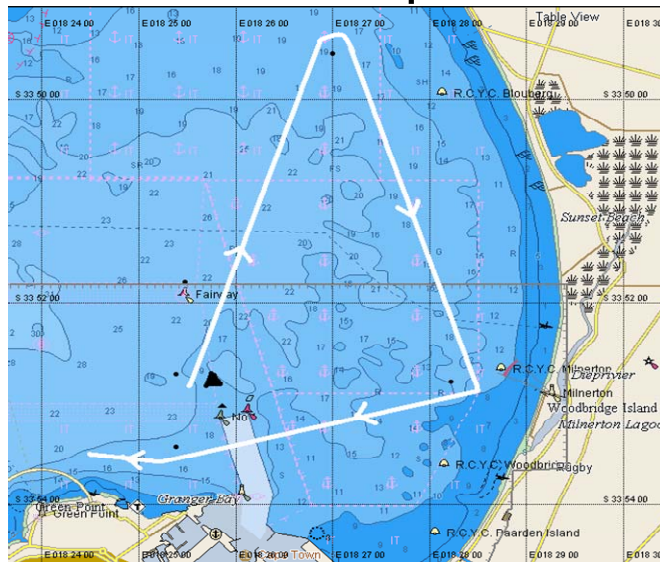
### **6. THE FINISH LINE**

The Finishing Line will be a Line between Buoy 1 at the starboard end and an orange flag displayed on a vessel at the port end

### 7. COURSE DIAGRAMS

In the event of a discrepancy between the diagram and the written word, the written word shall prevail.

## Course 1 Cape town



## Cochin Finish



**END: Jack Lloyd, Race Director, 14<sup>th</sup> November 2008**